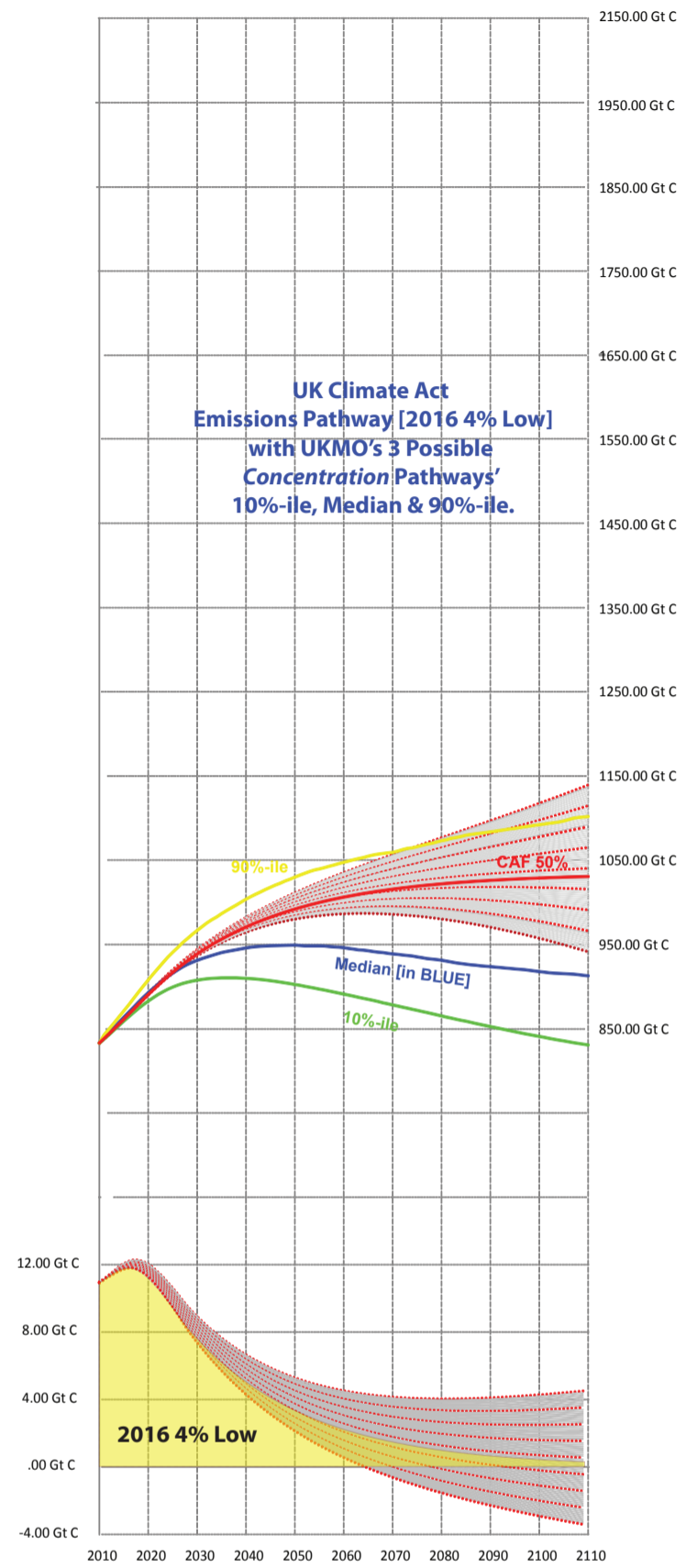
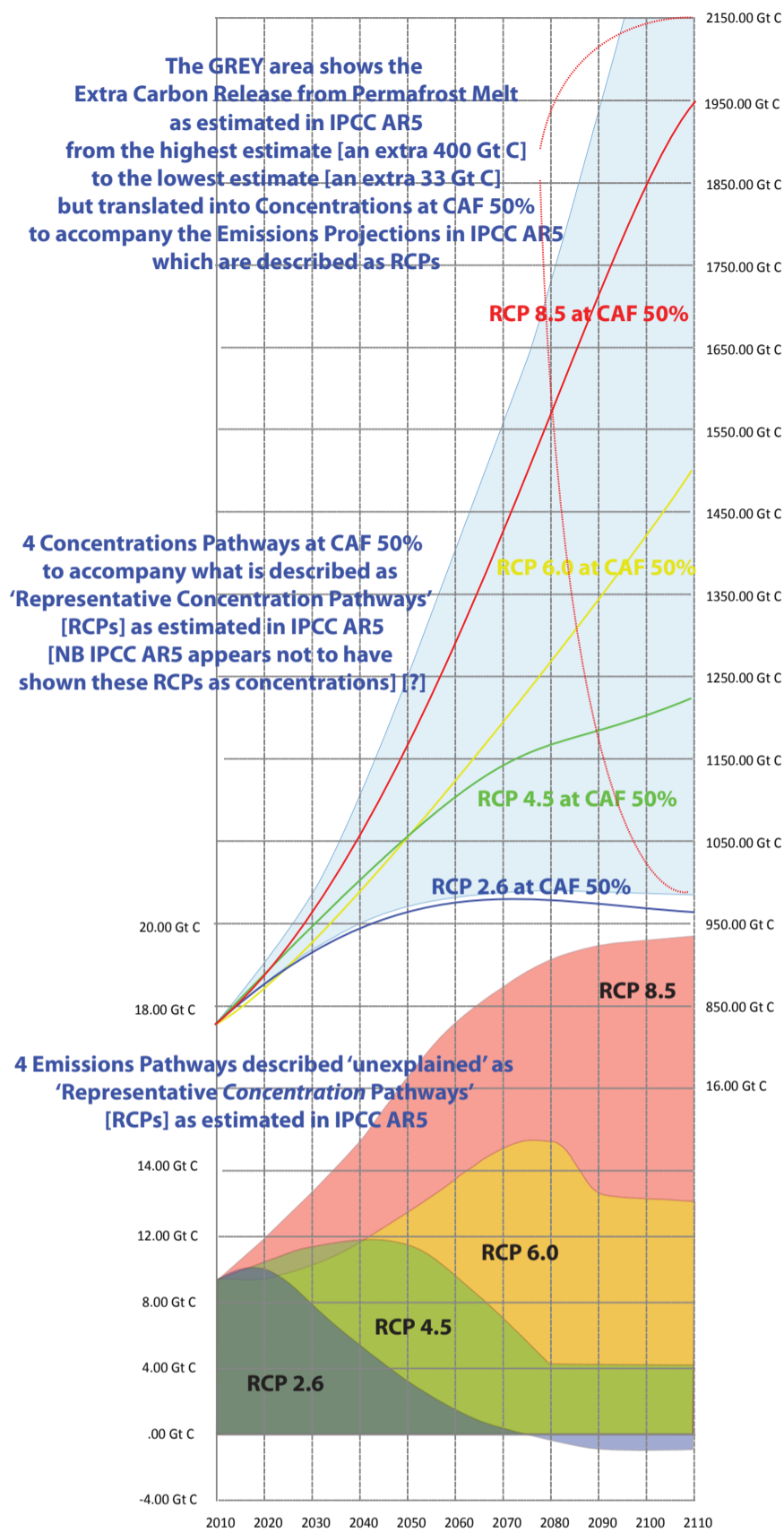
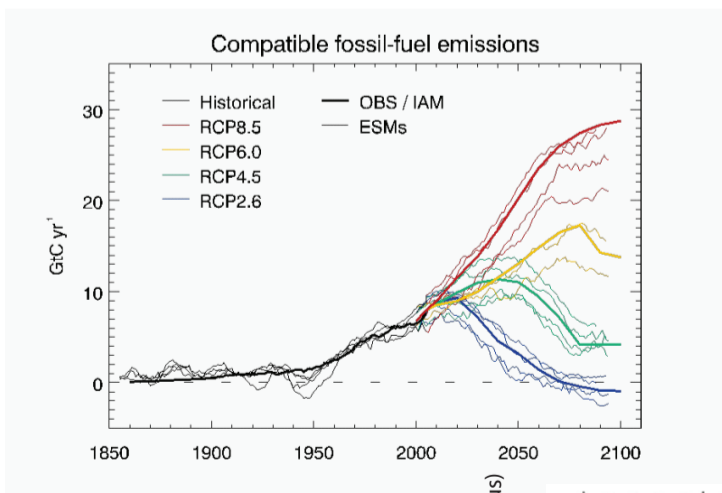


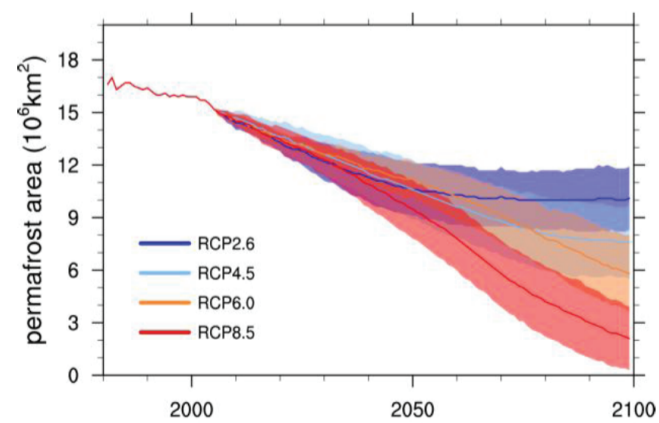
IPCC AR5 - their 4 Emissions Projections across the 21st Century [RCPs] with their estimated range of Carbon Release from Permafrost melt alongside the UK Climate Act at the same scale.



What AR5 calls 'Compatible Fossil Fuel Emissions' but described as Representative Concentration Pathways [RCPs] as projected in IPCC AR5 [& recreated above with Concentrations]..



Areas [in Km Squared] of Permafrost MELT to go with the Representative Concentration Pathways [RCPs] [shown alongside] as estimated in IPCC AR5.



Temperature rises projected in IPCC AR5 [Shown on the right] as estimated in IPCC AR5, appear to correspond with the so-called Representative Concentration Pathways [RCPs].

Note in Bob Watson's recent speech in San Francisco he says: - "we should prepare for a world of between 3 & 5 degrees"

This appears to equal prepare for RCP8.5

