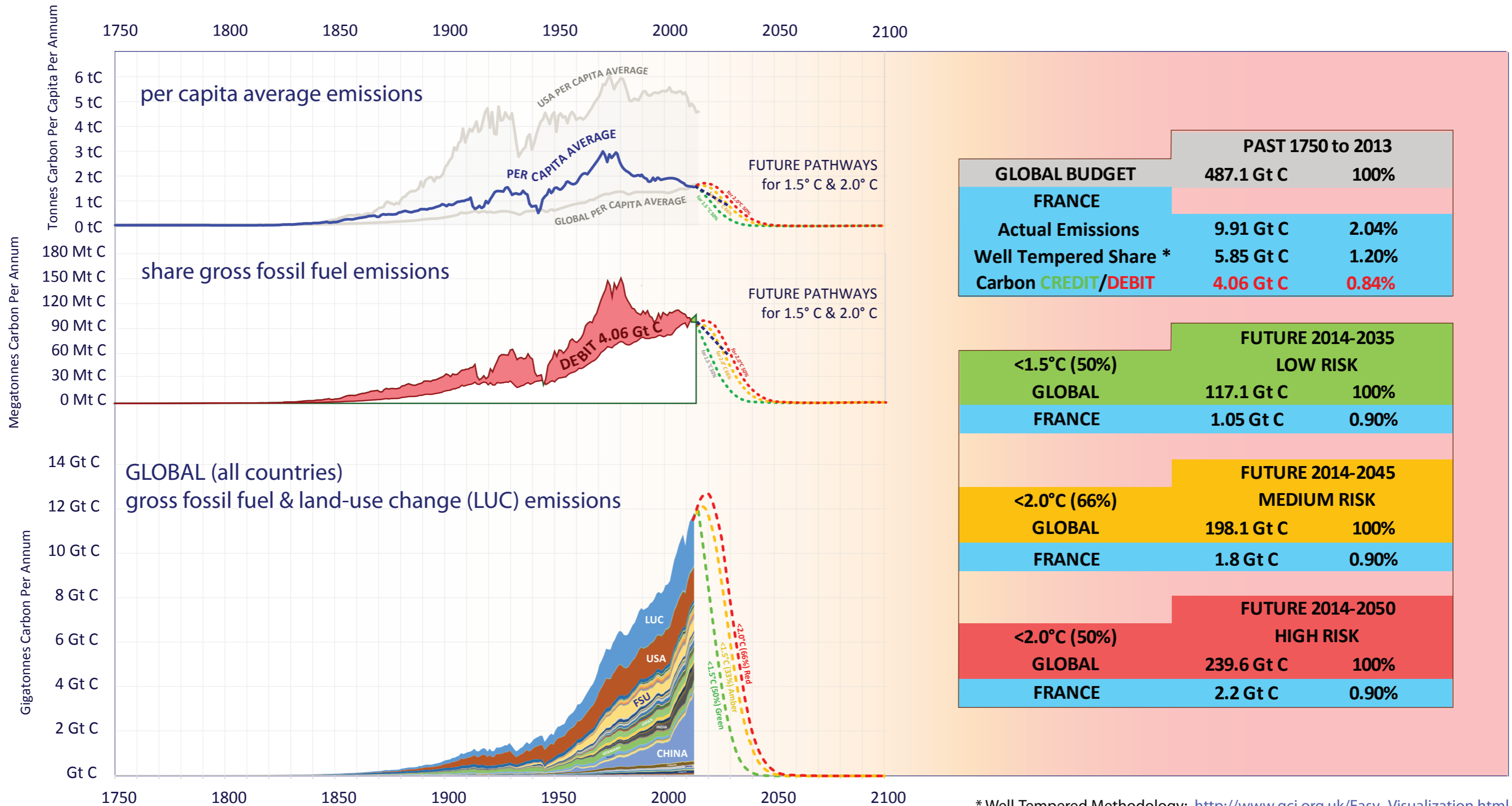
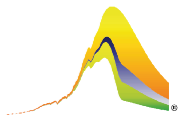


FRANCE & GLOBAL CO₂ EMISSIONS

Per Capita & Gross Emissions over time compared to global average.
 Carbon Credit/Debit accumulated 1750-2013 in Gigatonnes of Carbon (Gt C).
 Shares of budgets for 1.5°C & 2.0°C 2014-2050 & INDC.



* Well-Tempered Methodology: http://www.gci.org.uk/Easy_Visualization.html