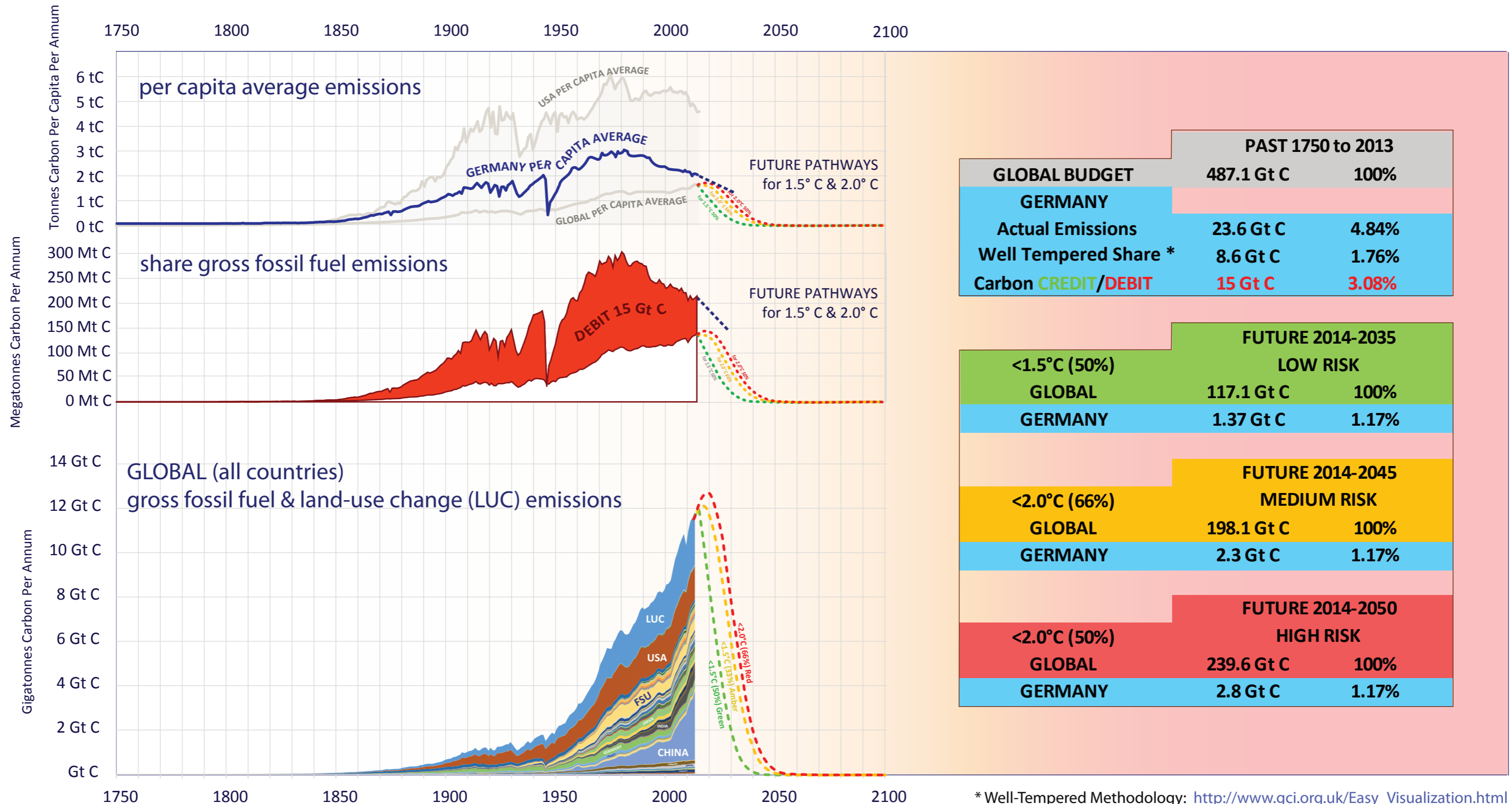
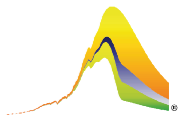


# GERMANY & GLOBAL CO<sub>2</sub> EMISSIONS

Per Capita & Gross Emissions over time compared to global average.  
 Carbon **Credit/Debit** accumulated 1750-2013 in Gigatonnes of Carbon (Gt C).  
 Shares of budgets for 1.5°C & 2.0°C 2014-2050 & INDC.



		PAST 1750 to 2013	
<b>GLOBAL BUDGET</b>		<b>487.1 Gt C</b>	<b>100%</b>
<b>GERMANY</b>			
Actual Emissions		23.6 Gt C	4.84%
Well Tempered Share *		8.6 Gt C	1.76%
Carbon <b>CREDIT/DEBIT</b>		<b>15 Gt C</b>	<b>3.08%</b>

		FUTURE 2014-2035	
		<b>LOW RISK</b>	
<b>&lt;1.5°C (50%)</b>			
GLOBAL		117.1 Gt C	100%
GERMANY		1.37 Gt C	1.17%

		FUTURE 2014-2045	
		<b>MEDIUM RISK</b>	
<b>&lt;2.0°C (66%)</b>			
GLOBAL		198.1 Gt C	100%
GERMANY		2.3 Gt C	1.17%

		FUTURE 2014-2050	
		<b>HIGH RISK</b>	
<b>&lt;2.0°C (50%)</b>			
GLOBAL		239.6 Gt C	100%
GERMANY		2.8 Gt C	1.17%

\* Well-Tempered Methodology: [http://www.gci.org.uk/Easy\\_Visualization.html](http://www.gci.org.uk/Easy_Visualization.html)