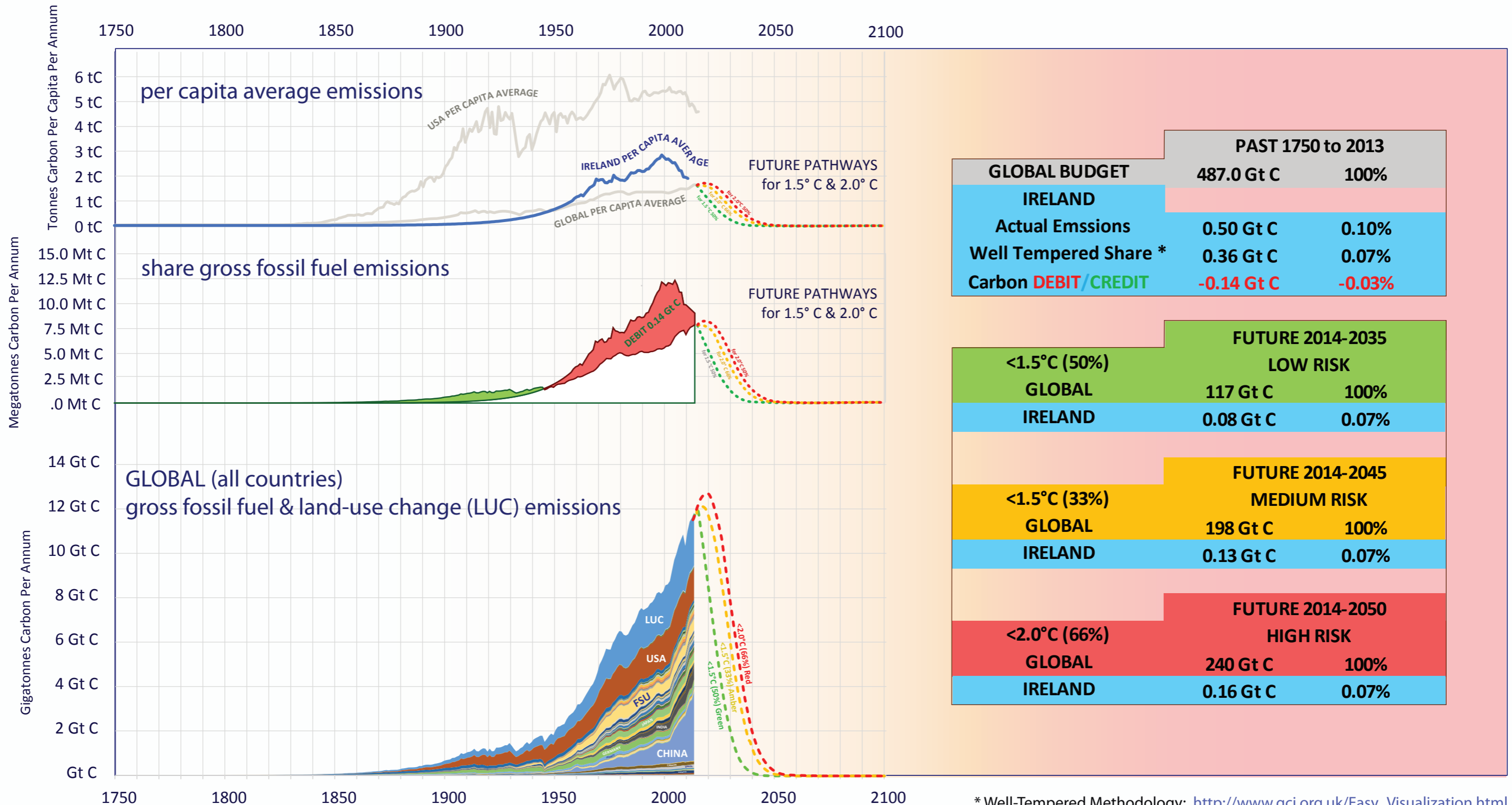
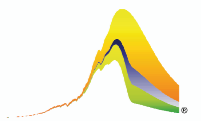


IRELAND & GLOBAL CO₂ EMISSIONS

Per Capita & Gross Emissions over time compared to global average.
 Carbon **Credit/Debit** accumulated 1750-2013 in Gigatonnes of Carbon (Gt C).
 Shares of budgets for 1.5°C & 2.0°C 2014-2050 & INDC.



	PAST 1750 to 2013	
GLOBAL BUDGET	487.0 Gt C	100%
IRELAND		
Actual Emissions	0.50 Gt C	0.10%
Well Tempered Share *	0.36 Gt C	0.07%
Carbon DEBIT/CREDIT	-0.14 Gt C	-0.03%

	FUTURE 2014-2035	
<1.5°C (50%)	LOW RISK	
GLOBAL	117 Gt C	100%
IRELAND	0.08 Gt C	0.07%

	FUTURE 2014-2045	
<1.5°C (33%)	MEDIUM RISK	
GLOBAL	198 Gt C	100%
IRELAND	0.13 Gt C	0.07%

	FUTURE 2014-2050	
<2.0°C (66%)	HIGH RISK	
GLOBAL	240 Gt C	100%
IRELAND	0.16 Gt C	0.07%

* Well-Tempered Methodology: http://www.gci.org.uk/Easy_Visualization.html