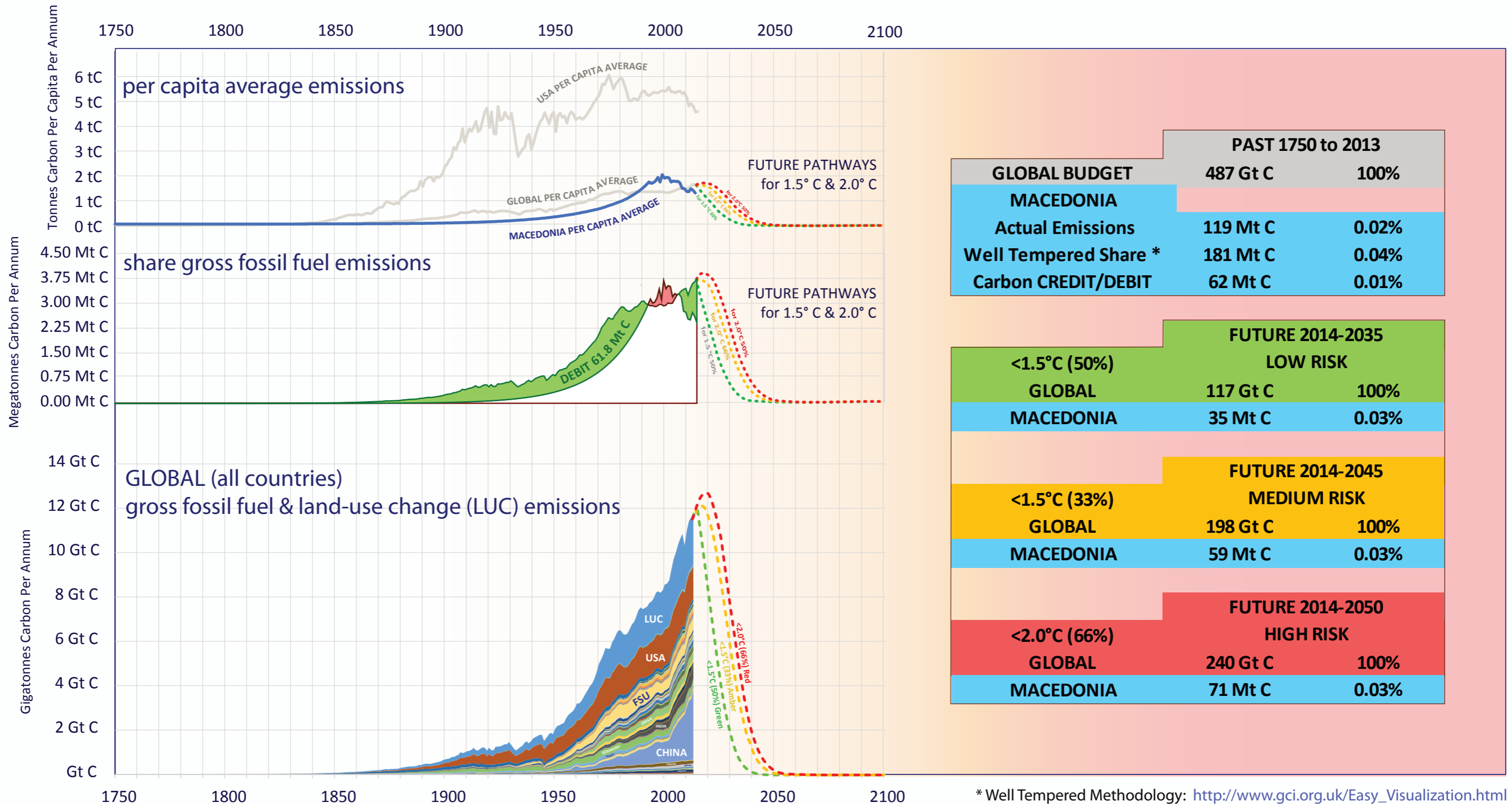
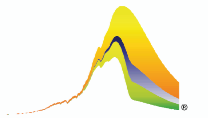


# MACEDONIA GLOBAL CO<sub>2</sub> EMISSIONS

Per Capita & Gross Emissions over time compared to global average.  
 Carbon **Credit/Debit** accumulated 1750-2013 in Gigatonnes of Carbon (Gt C).  
 Shares of budgets for 1.5°C & 2.0°C 2014-2050 & INDC.



	PAST 1750 to 2013	
<b>GLOBAL BUDGET</b>	<b>487 Gt C</b>	<b>100%</b>
<b>MACEDONIA</b>		
Actual Emissions	119 Mt C	0.02%
Well Tempered Share *	181 Mt C	0.04%
Carbon CREDIT/DEBIT	62 Mt C	0.01%

	FUTURE 2014-2035	
<b>&lt;1.5°C (50%)</b>	<b>LOW RISK</b>	
<b>GLOBAL</b>	<b>117 Gt C</b>	<b>100%</b>
<b>MACEDONIA</b>	<b>35 Mt C</b>	<b>0.03%</b>

	FUTURE 2014-2045	
<b>&lt;1.5°C (33%)</b>	<b>MEDIUM RISK</b>	
<b>GLOBAL</b>	<b>198 Gt C</b>	<b>100%</b>
<b>MACEDONIA</b>	<b>59 Mt C</b>	<b>0.03%</b>

	FUTURE 2014-2050	
<b>&lt;2.0°C (66%)</b>	<b>HIGH RISK</b>	
<b>GLOBAL</b>	<b>240 Gt C</b>	<b>100%</b>
<b>MACEDONIA</b>	<b>71 Mt C</b>	<b>0.03%</b>

\* Well Tempered Methodology: [http://www.gci.org.uk/Easy\\_Visualization.html](http://www.gci.org.uk/Easy_Visualization.html)