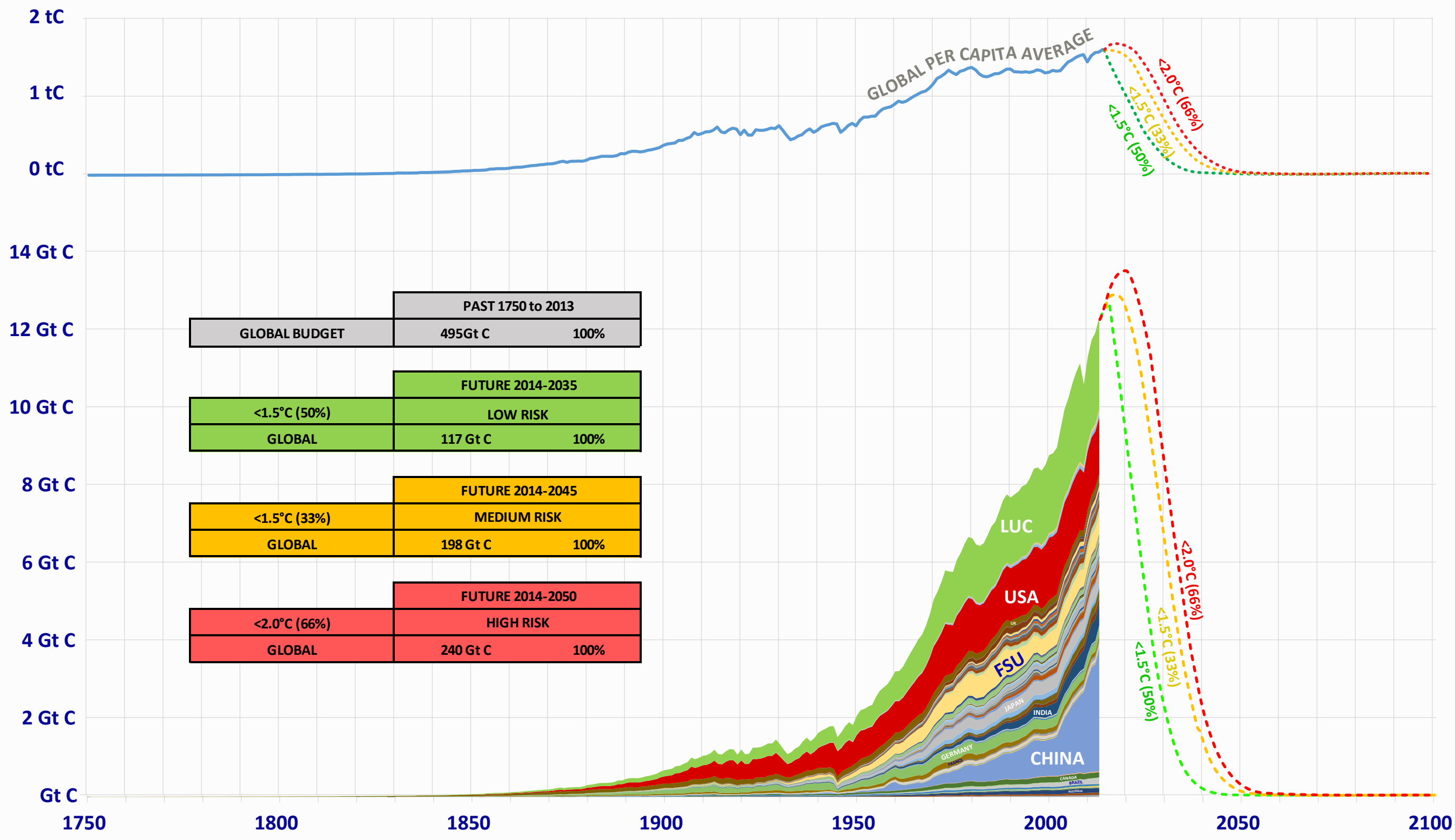
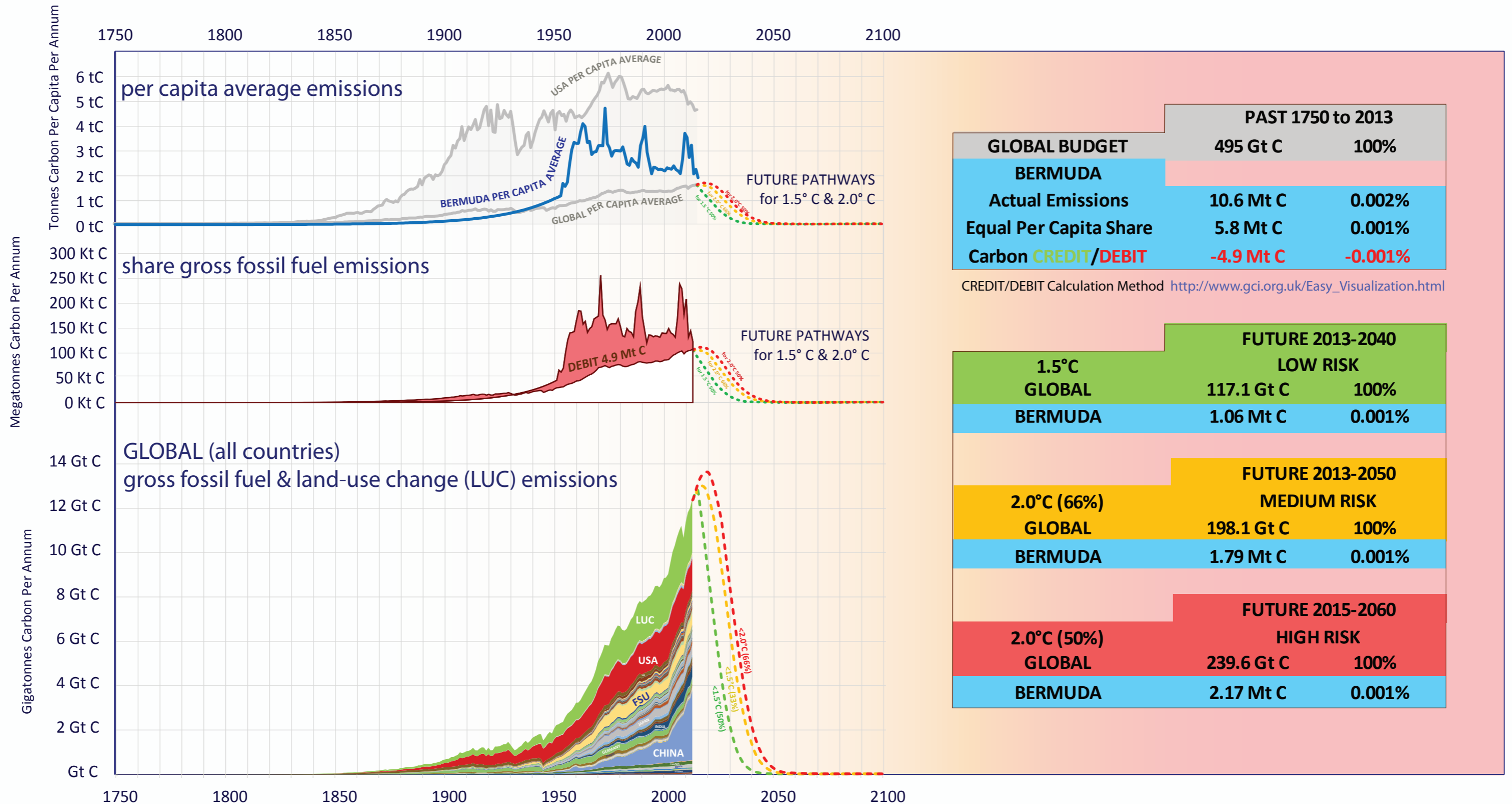
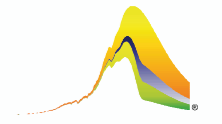


All countries fossil fuel emissions with global Land Use Change (LUC) 1750-2013 & 3 global carbon contraction rates for 1.5° & 2.0°C (IPCC AR5) 2014-2050



BERMUDA & GLOBAL CO₂ EMISSIONS

Per Capita & Gross Emissions over time compared to global average.
 Carbon **Credit/Debit** accumulated 1750-2013 in Gigatonnes of Carbon (Gt C).
 Shares of budgets for 1.5°C & 2.0°C 2014-2050 & INDC.



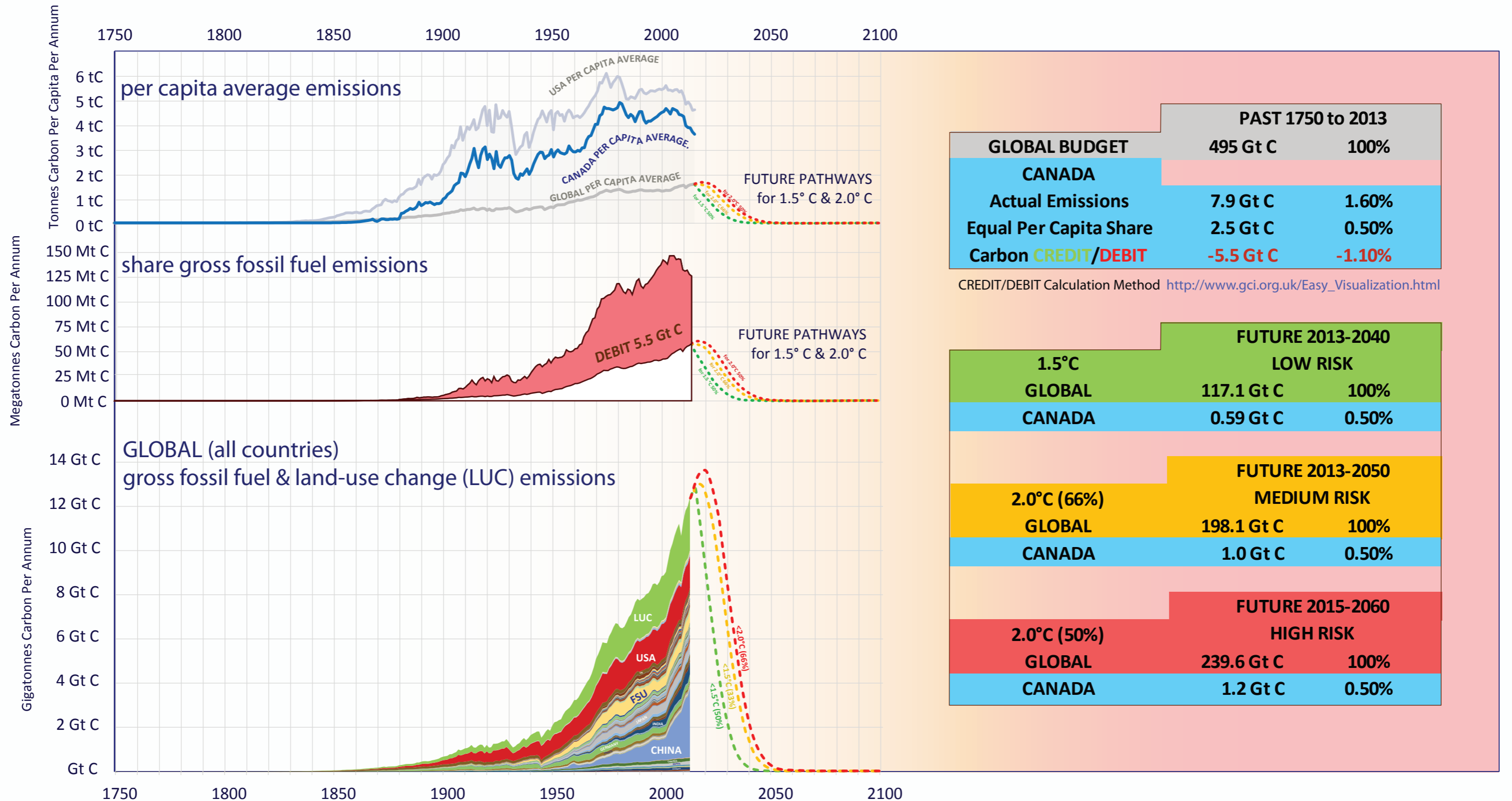
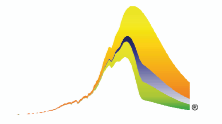
	PAST 1750 to 2013	
GLOBAL BUDGET	495 Gt C	100%
BERMUDA		
Actual Emissions	10.6 Mt C	0.002%
Equal Per Capita Share	5.8 Mt C	0.001%
Carbon CREDIT/DEBIT	-4.9 Mt C	-0.001%

CREDIT/DEBIT Calculation Method http://www.gci.org.uk/Easy_Visualization.html

	FUTURE 2013-2040	
1.5°C	LOW RISK	
GLOBAL	117.1 Gt C	100%
BERMUDA	1.06 Mt C	0.001%
	FUTURE 2013-2050	
2.0°C (66%)	MEDIUM RISK	
GLOBAL	198.1 Gt C	100%
BERMUDA	1.79 Mt C	0.001%
	FUTURE 2015-2060	
2.0°C (50%)	HIGH RISK	
GLOBAL	239.6 Gt C	100%
BERMUDA	2.17 Mt C	0.001%

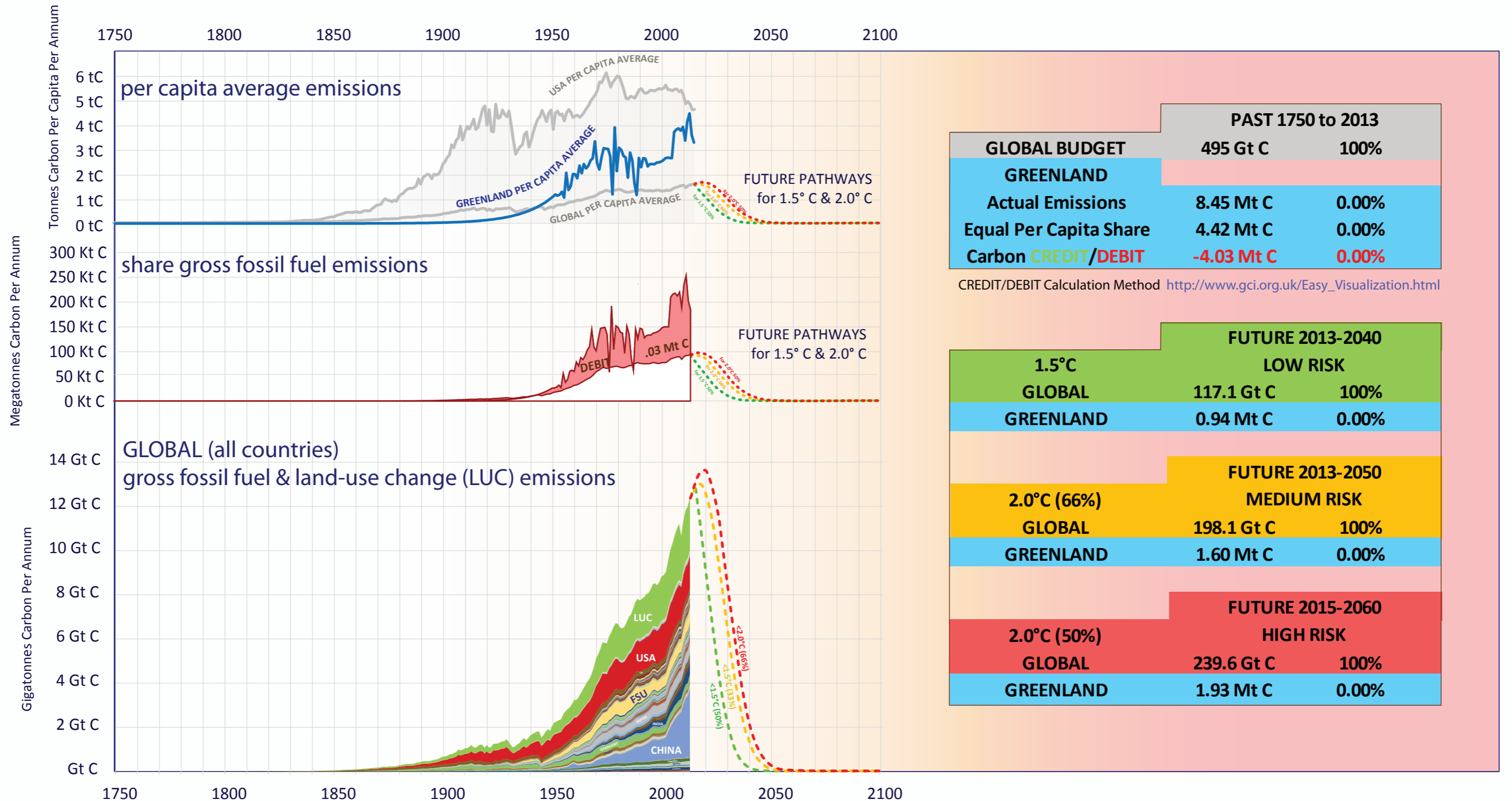
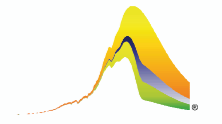
CANADA & GLOBAL CO₂ EMISSIONS

Per Capita & Gross Emissions over time compared to global average.
 Carbon **Credit/Debit** accumulated 1750-2013 in Gigatonnes of Carbon (Gt C).
 Shares of budgets for 1.5°C & 2.0°C 2014-2050 & INDC.



GREENLAND & GLOBAL CO₂ EMISSIONS

Per Capita & Gross Emissions over time compared to global average.
 Carbon **Credit/Debit** accumulated 1750-2013 in Gigatonnes of Carbon (Gt C).
 Shares of budgets for 1.5°C & 2.0°C 2014-2050 & INDC.



UNITED STATES & GLOBAL CO₂ EMISSIONS

Per Capita & Gross Emissions over time compared to global average.
 Carbon **Credit/Debit** accumulated 1750-2013 in Gigatonnes of Carbon (Gt C).
 Shares of budgets for 1.5°C & 2.0°C 2014-2050 & INDC.

