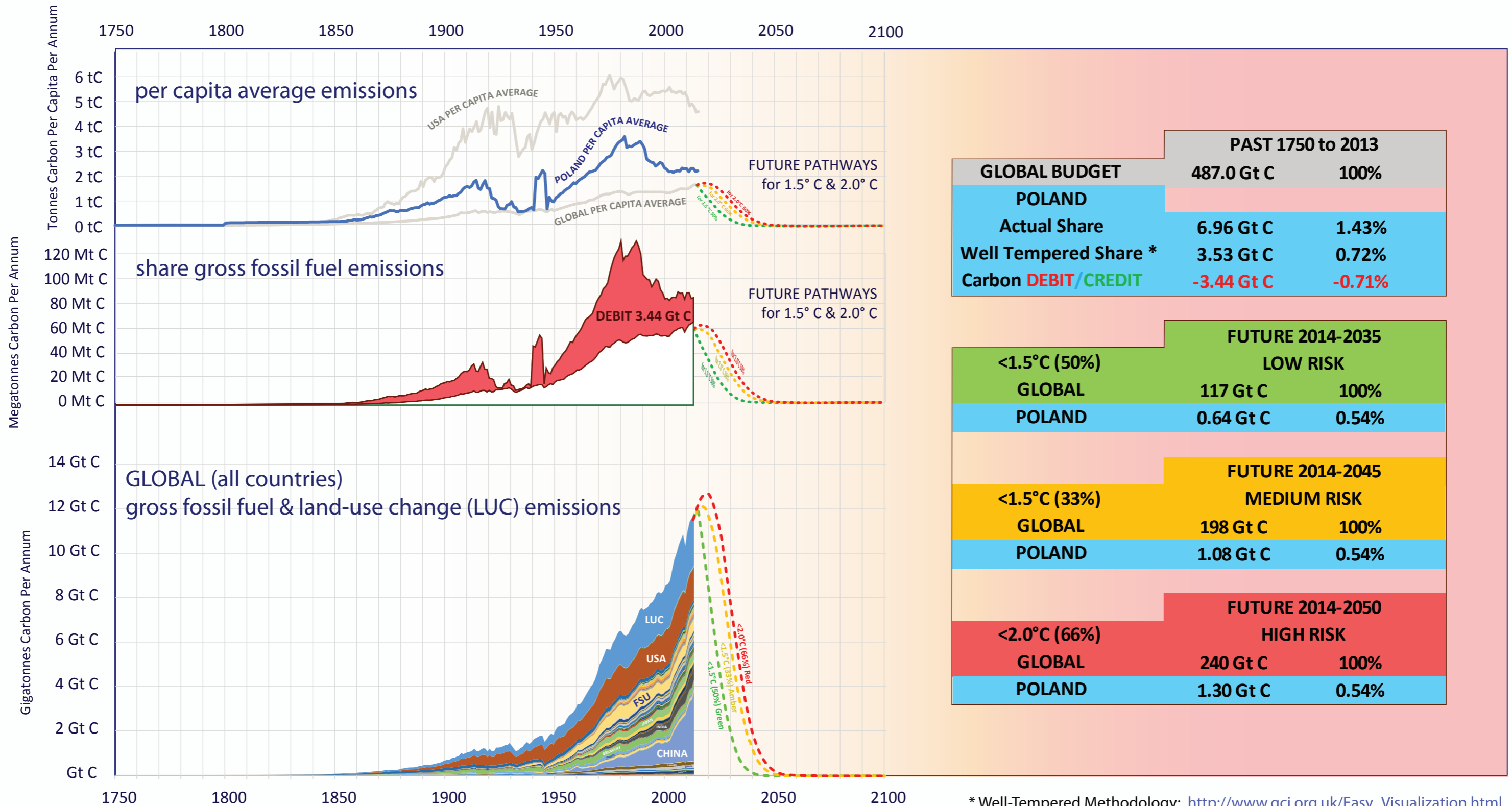
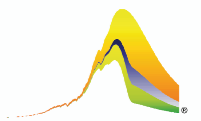


# POLAND & GLOBAL CO<sub>2</sub> EMISSIONS

Per Capita & Gross Emissions over time compared to global average.  
 Carbon **Credit/Debit** accumulated 1750-2013 in Gigatonnes of Carbon (Gt C).  
 Shares of budgets for 1.5°C & 2.0°C 2014-2050 & INDC.



	PAST 1750 to 2013	
<b>GLOBAL BUDGET</b>	<b>487.0 Gt C</b>	<b>100%</b>
<b>POLAND</b>		
Actual Share	6.96 Gt C	1.43%
Well Tempered Share *	3.53 Gt C	0.72%
Carbon <b>DEBIT/CREDIT</b>	<b>-3.44 Gt C</b>	<b>-0.71%</b>

	FUTURE 2014-2035	
<b>&lt;1.5° C (50%)</b>	<b>LOW RISK</b>	
<b>GLOBAL</b>	<b>117 Gt C</b>	<b>100%</b>
<b>POLAND</b>	<b>0.64 Gt C</b>	<b>0.54%</b>

	FUTURE 2014-2045	
<b>&lt;1.5° C (33%)</b>	<b>MEDIUM RISK</b>	
<b>GLOBAL</b>	<b>198 Gt C</b>	<b>100%</b>
<b>POLAND</b>	<b>1.08 Gt C</b>	<b>0.54%</b>

	FUTURE 2014-2050	
<b>&lt;2.0° C (66%)</b>	<b>HIGH RISK</b>	
<b>GLOBAL</b>	<b>240 Gt C</b>	<b>100%</b>
<b>POLAND</b>	<b>1.30 Gt C</b>	<b>0.54%</b>

\* Well-Tempered Methodology: [http://www.gci.org.uk/Easy\\_Visualization.html](http://www.gci.org.uk/Easy_Visualization.html)