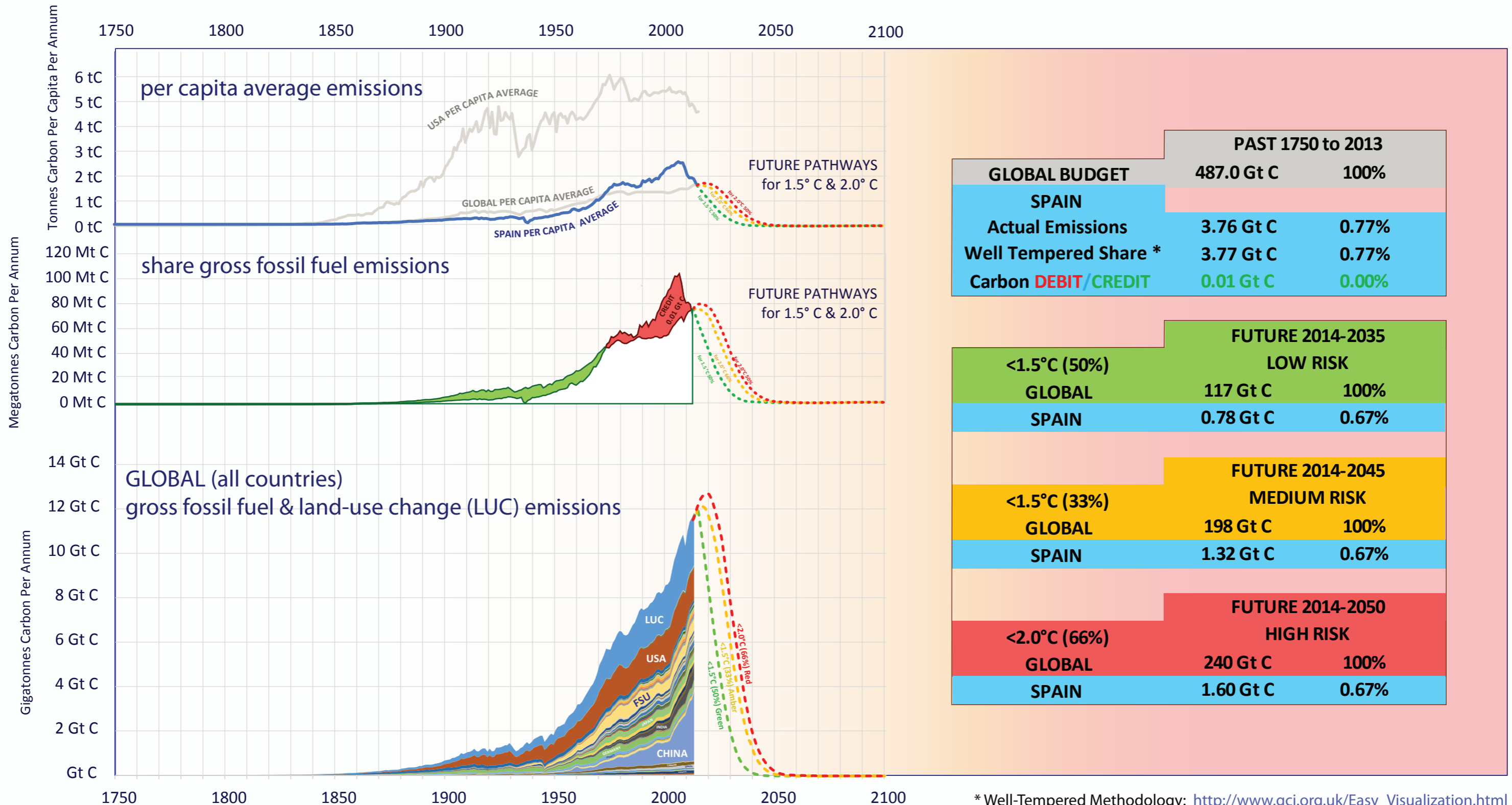
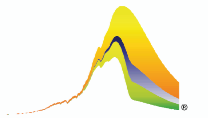


# SPAIN & GLOBAL CO<sub>2</sub> EMISSIONS

Per Capita & Gross Emissions over time compared to global average.  
 Carbon **Credit/Debit** accumulated 1750-2013 in Gigatonnes of Carbon (Gt C).  
 Shares of budgets for 1.5°C & 2.0°C 2014-2050 & INDC.



\* Well-Tempered Methodology: [http://www.gci.org.uk/Easy\\_Visualization.html](http://www.gci.org.uk/Easy_Visualization.html)