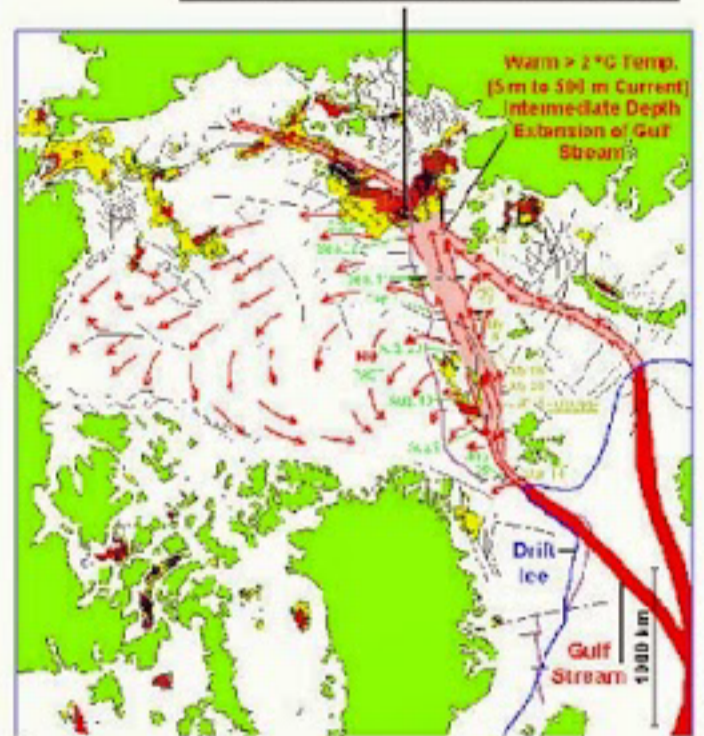


# WARNING

Planetary Omnicide between 2023 and 2031

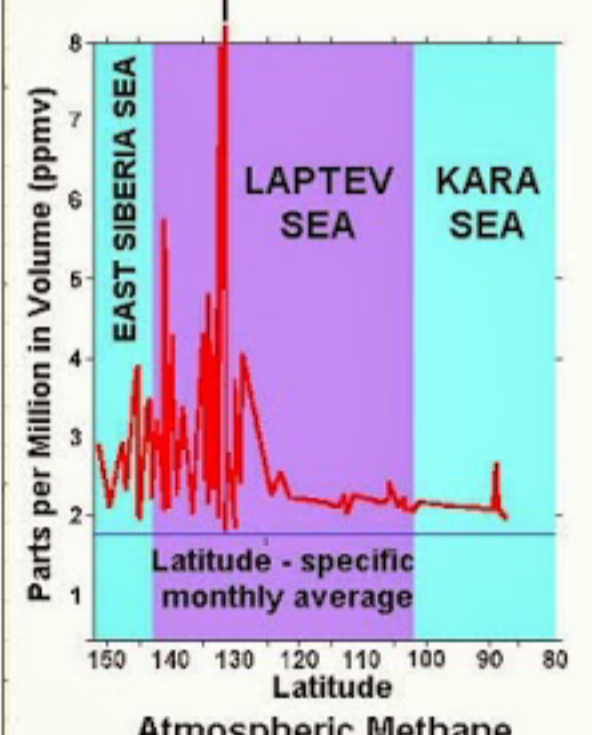
## Enrico Mantle Methane Eruption Anomaly



### LEGEND

- Continents and Islands
- North Pole
- Gakkel Mid - Ocean Ridge
- Fault and shear zones
- Fractures from Eruption Centres
- Zones with a High Density of Subsea Methane Eruption Centres (Torches)

## Enrico Mantle Methane Eruption Anomaly

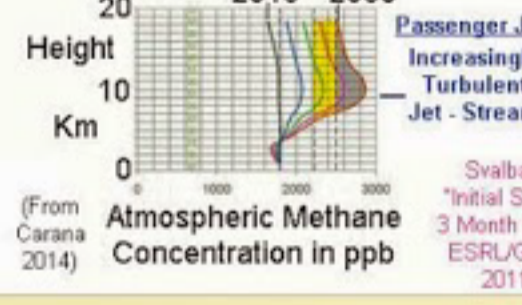


### Atmospheric Methane Concentration in Arctic (Pravettoni, 2009)

## The Expanding Atmospheric Methane Veil

Giant Atmospheric Methane Plume Erupting from the Enrico Mantle Methane Anomaly on the Laptev Sea - Arctic Ocean Transition. The Enrico Anomaly - Clathrate Gun Began to Erupt in Earnest May 12th, 2011 and is Building Strength at an Exponential Pace. By 2014, a Global Atmospheric Methane Veil between 7 - 18km in Altitude is associated with World - Wide Extreme Heating, Fires, Droughts and Catastrophic Weather Systems

### Methane Global Warming Veil



MetOp-1 recorded methane levels as high as 2561 ppb on August 28, 2014 am. Created by Sam Carana for Arctic-news.blogspot.com

Mean Mass Atmospheric Methane Carbon 5Gt

## Arctic Methane Clathrate Gun Fires in 2011 Erupting a Thickening Methane Global Warming Veil

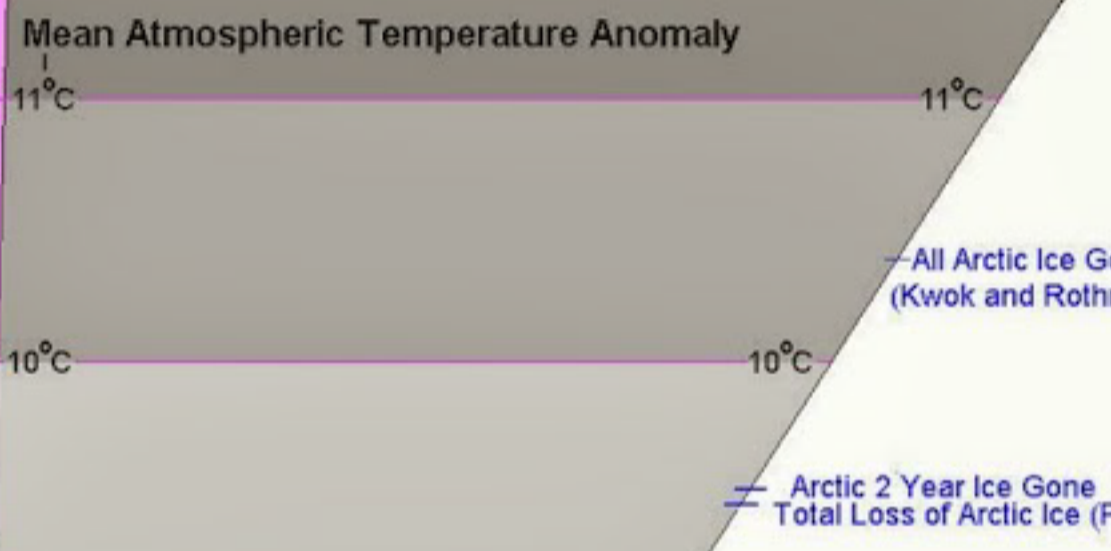
Mean Mass Atmospheric Methane - Carbon in Billions of Tons - Gt

50Gt Subsea Arctic Methane Could Erupt at any moment from the East Siberian Arctic Shelf (Shakova 2010)

## Trend of Yearly Absolute Maximum Methane Concentrations in the Arctic Methane Global Warming Veil



**Worst Case Scenario**  
**Best Case Scenario**  
 Mean Atmospheric Temperature 26.7°C - Equals Permian Extinction



Data Sources  
 Giss, Hansen, 2012  
 Plomas, NSIDC, NASA  
 Zang & Rothrock 2003, 2012  
 Tscudi & Maslanik, 2012  
 IPCC 1992, 2007

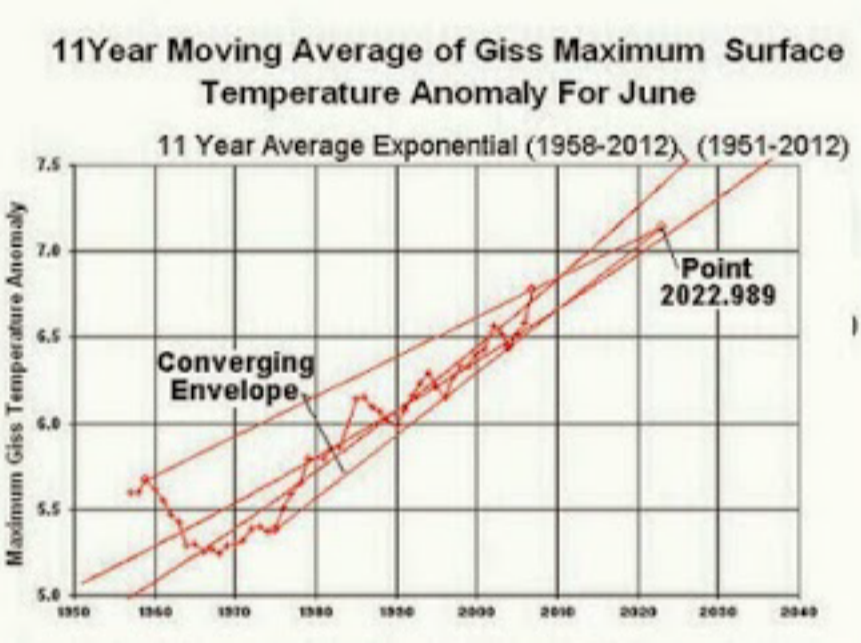


Figure 9. Converging 11 year moving average of Giss maximum surface temperature anomalies from NASA, 2012 data.

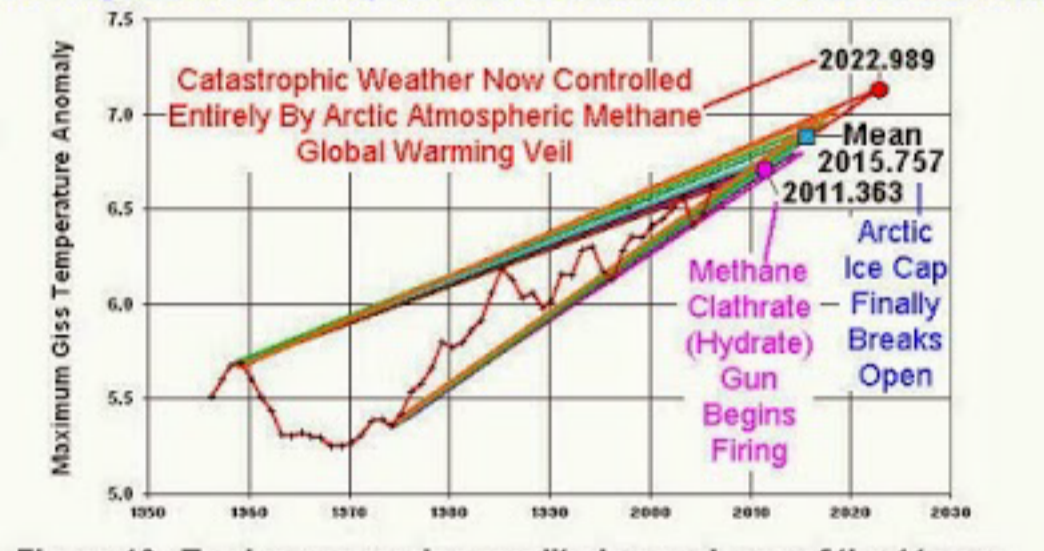
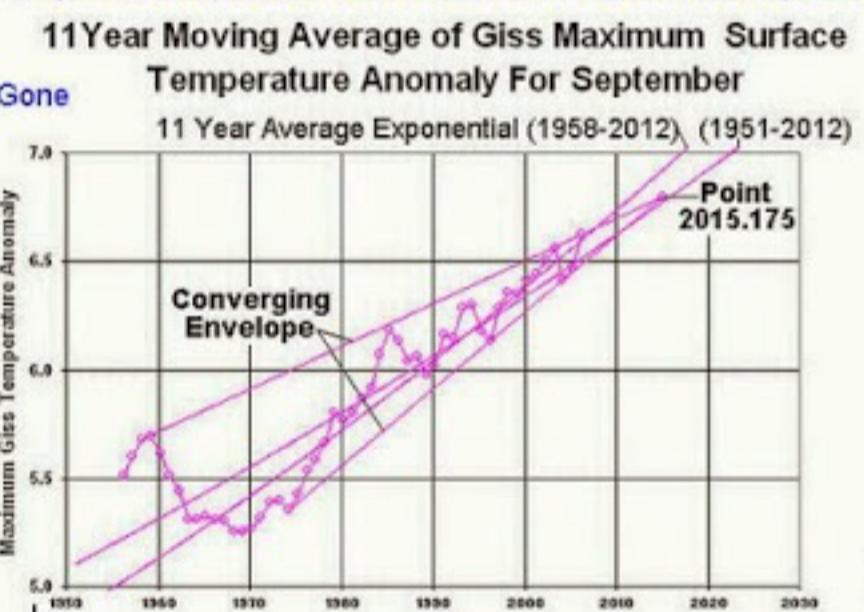
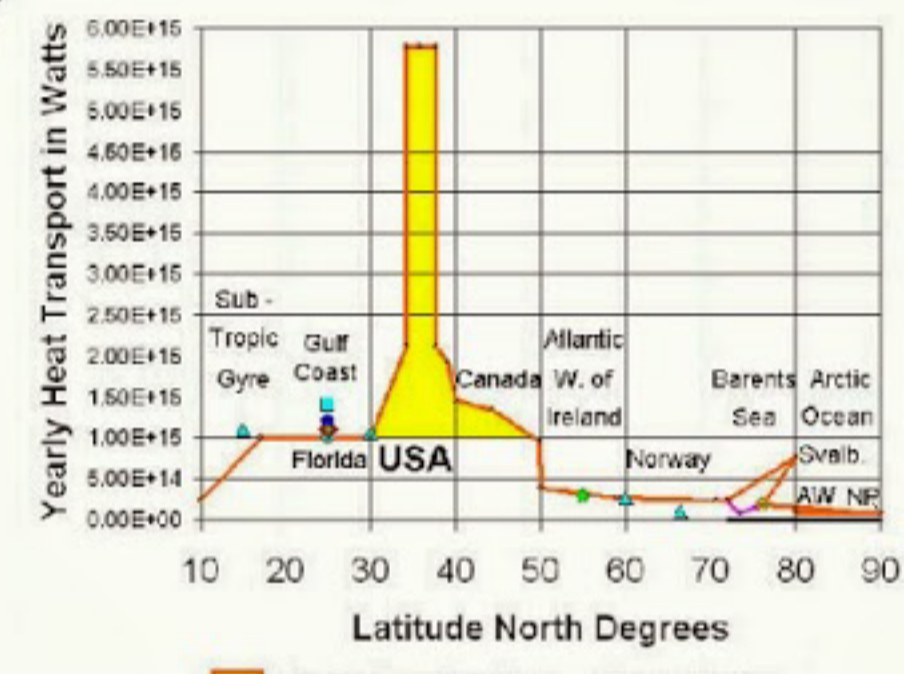


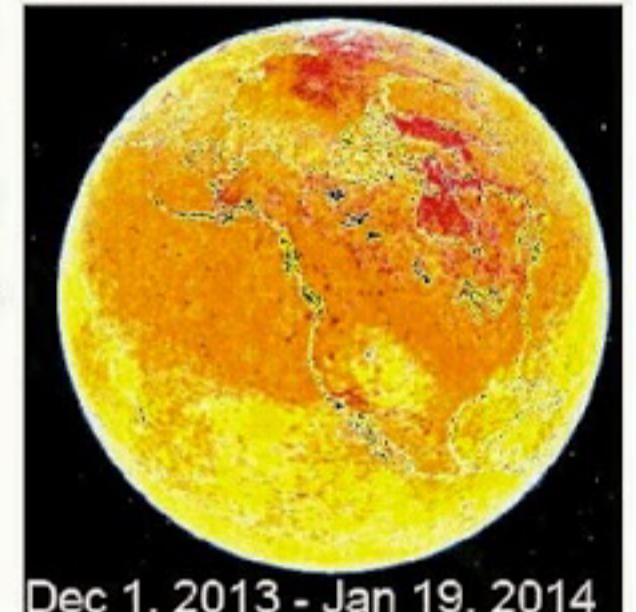
Figure 10. Twelve converging amplitude envelopes of the 11 year moving average of the Giss maximum surface temperature anomaly with the final mean convergence point value (NASA 2012 Giss data).



Anomalous heating, rates of wind induced cur. flow, evaporation and elevation of the Gulf Stream from giant pollution clouds pouring off the east coast of the industrialized zones of the United States/Canada.

Extreme Methane Eruption Zone  
 Arctic methane global warming induced total deglaciation and major extinction between 2007 and 2052.

### Arctic Methane Global Warming Veil Spreading South at 1 km Day



Dec 1, 2013 - Jan 19, 2014  
 Methane Ranges  
 1950+ ppb  
 1850ppb - 1950ppb  
 1750ppb - 1850ppb  
 From Sam Carana 2014. Created with methanetracker.org

Poster by Malcolm Light, Sam Carana, Harold Hensel and further (anonymous) contributors. Support our call for comprehensive and effective action by tagging your name into this poster!

Data from ESRL/GMD from Carana (2011, 2014) and the arctic-news.blogspot.com  
 Diaz (2014) <http://www.examiner.com/article/dr-malcolm-light-interview-on-climate-change-extreme-national-emergency>

